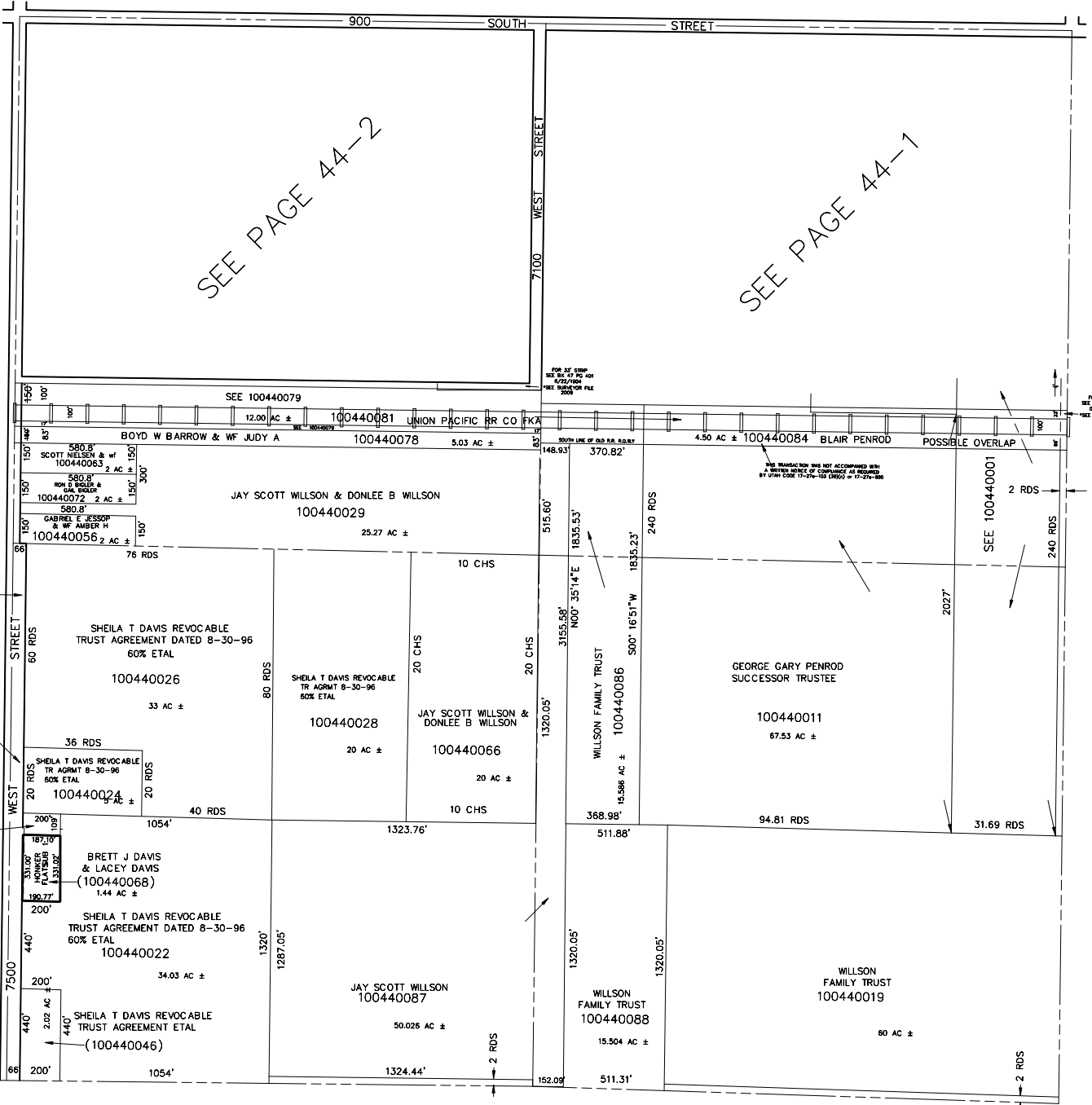


SECTION 23, T.6N., R.3W., S.L.B.& M.

IN WEBER COUNTY  
SCALE 1" = 400'

TAXING UNITS: 303

SEE PAGE 36



SEE PAGE 44-2

SEE PAGE 44-1

SEE PAGE 43

SEE PAGE 45

WEBER COUNTY (100440027)

WEBER COUNTY (100440025)

JEFFERY L DAVIS & WF CRISTA MARY (100440023) 21,800 SQ FT

SEE PAGE 47